

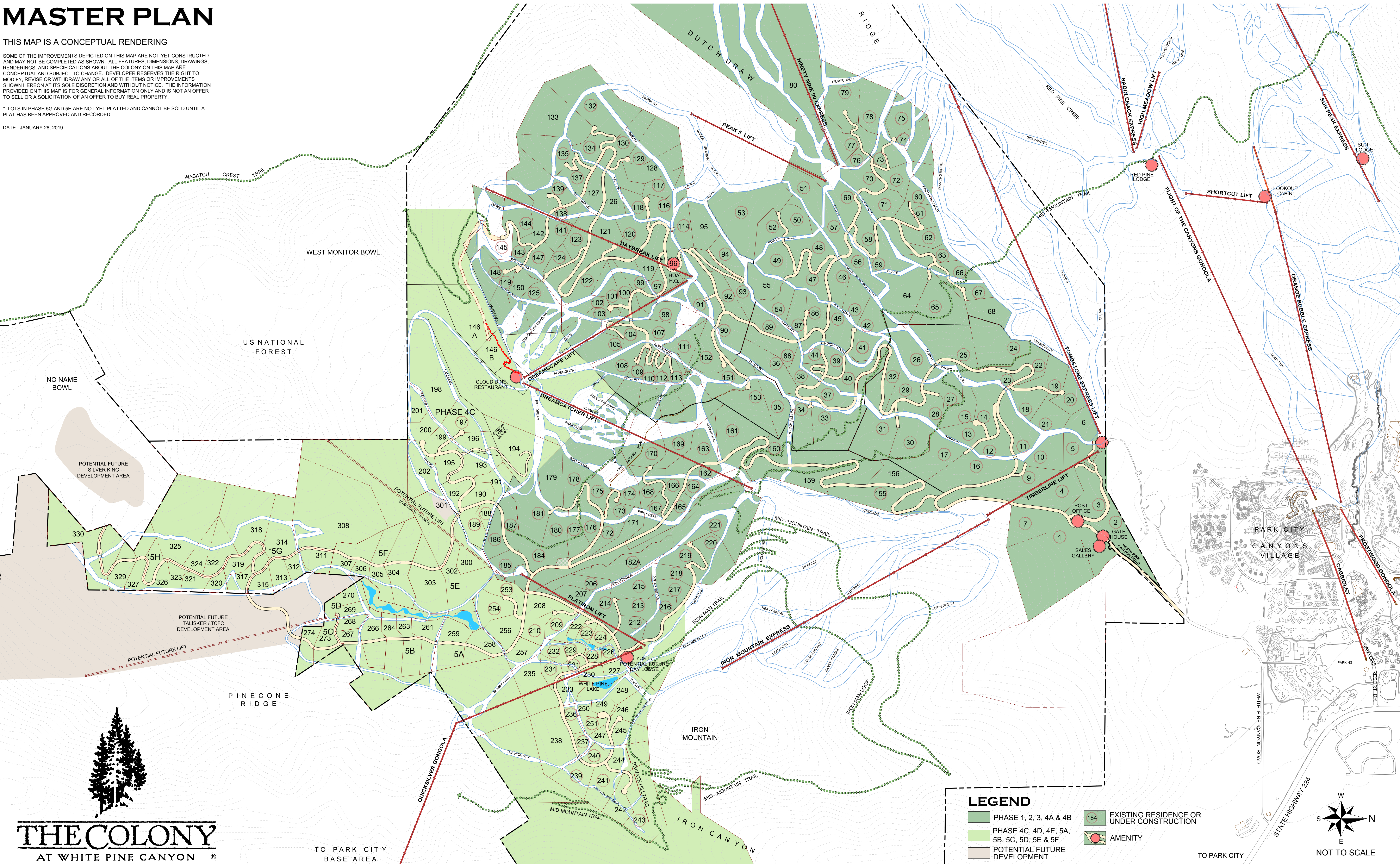
MASTER PLAN

THIS MAP IS A CONCEPTUAL RENDERING

SOME OF THE IMPROVEMENTS DEPICTED ON THIS MAP ARE NOT YET CONSTRUCTED AND MAY NOT BE COMPLETED AS SHOWN. ALL FEATURES, DIMENSIONS, DRAWINGS, RENDERINGS, AND SPECIFICATIONS ABOUT THE COLONY ON THIS MAP ARE CONCEPTUAL AND SUBJECT TO CHANGE. DEVELOPER RESERVES THE RIGHT TO MODIFY, REVISE OR WITHDRAW ANY OR ALL OF THE ITEMS OR IMPROVEMENTS SHOWN HEREON AT ITS SOLE DISCRETION AND WITHOUT NOTICE. THE INFORMATION PROVIDED ON THIS MAP IS FOR GENERAL INFORMATION ONLY AND IS NOT AN OFFER TO SELL OR A SOLICITATION OF AN OFFER TO BUY REAL PROPERTY.

* LOTS IN PHASE 5G AND 5H ARE NOT YET PLATTED AND CANNOT BE SOLD UNTIL A PLAT HAS BEEN APPROVED AND RECORDED.

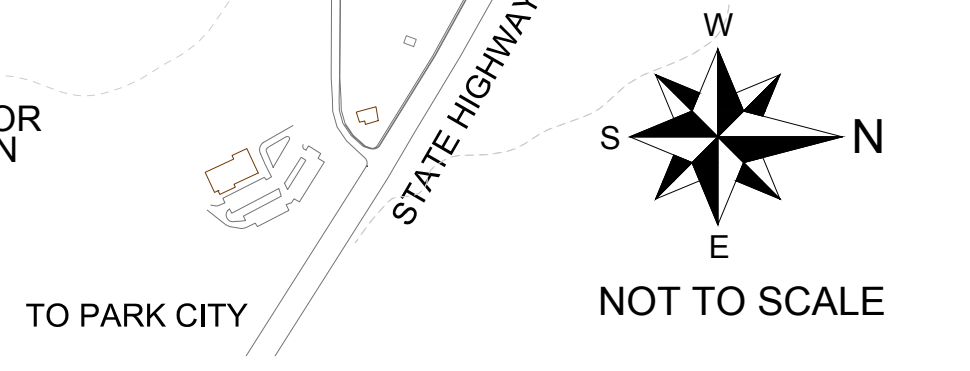
DATE: JANUARY 28, 2019



TO PARK CITY
BASE AREA

LEGEND

- PHASE 1, 2, 3, 4A & 4B
- PHASE 4C, 4D, 4E, 5A, 5B, 5C, 5D, 5E & 5F
- POTENTIAL FUTURE DEVELOPMENT
- 184 EXISTING RESIDENCE OR UNDER CONSTRUCTION
- AMENITY



TO PARK CITY

STATE HIGHWAY 224